



Percentage of residents living below the poverty level in Mobile County



Percentage of residents with income below 50% of the poverty level in Mobile County



Percentage of children living below poverty rate in Mobile County



Poverty rate among disabled males



Poverty rate among disabled females

To learn how you can help, visit MAWSS.com/Neighbors

MOBILE AREA WATER & SEWER SYSTEM

MAWSS

HELP KEEP WATER FLOWING
for families throughout our community.



**Neighbors
 in Need**

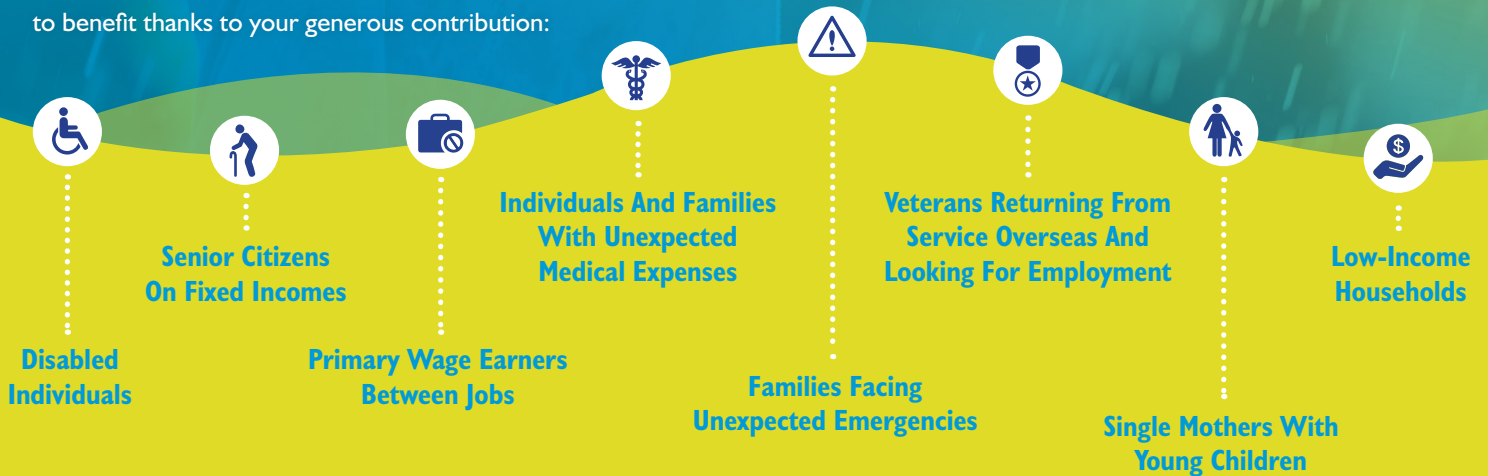
There are neighbors who need help paying their bills. **SO WE CREATED AN EASY WAY FOR YOU TO HELP THEM.**

A customer assistance program where even a small donation can make a big impact.

Due to temporary or long-term financial difficulties, many families need help paying their water and sewer bills from time to time. That's why MAWSS created Neighbors In Need, to make it easy to donate when paying your monthly bill and keep water flowing for families throughout Mobile County. This program is administered by Mobile Community Action, Inc. and is based on income eligibility.

A drop in the bucket to you. A world of difference to them.

Neighbors In Need was created to help you help others. These are just a few examples of the types of people who stand to benefit thanks to your generous contribution:



Families in need can't afford to go without water.

MAKE A DONATION TODAY.

Visit MAWSS.com/Neighbors to learn how you can help or select a recurring donation amount on your bill to help all our neighbors and keep water flowing.

